

RICE | CSWGS

Center for the Study of Women, Gender and Sexuality

Annual

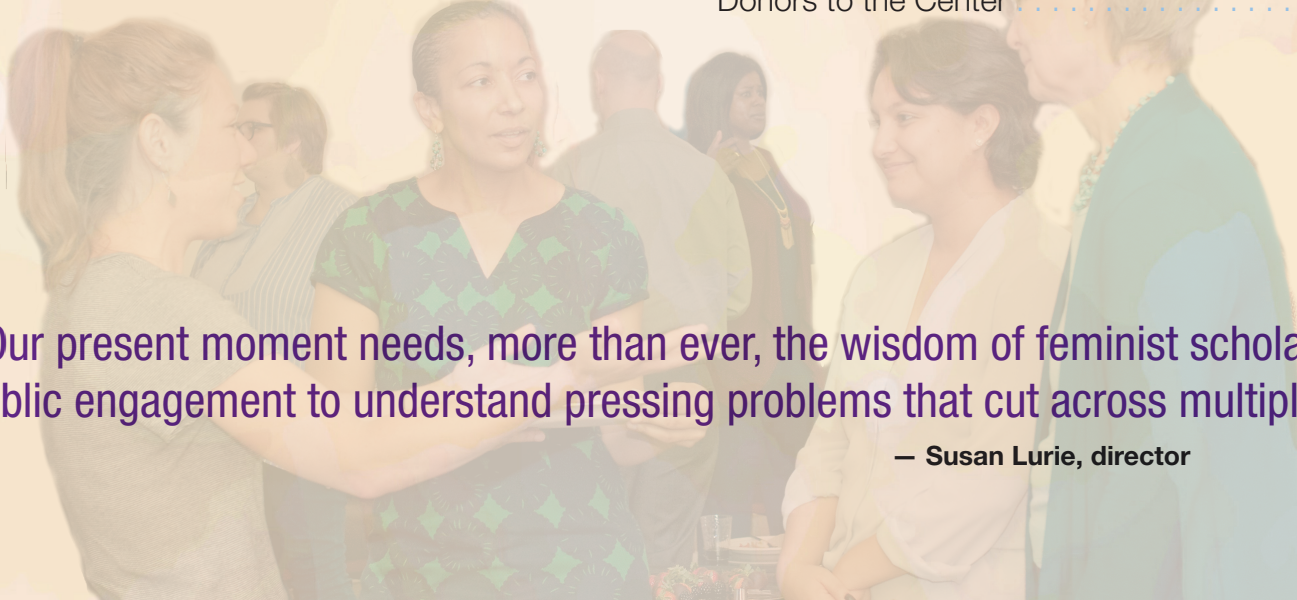
Report

2016–2017

Table of Contents

From the Director	2
Our Mission	3
The Year in Numbers	4–5
New Initiatives	6
Center Events	7–8
Feminist Economics	9

PJHC Minor	9
Prizes and Awards	10
Alumni Spotlight	11
New Alumni / Faculty Affiliates	12–13
Financial Summary	14
Advisory Board	15–17
Donors to the Center	18

A photograph of a group of people, primarily women, engaged in conversation at a social gathering. The image is overlaid with a semi-transparent purple and blue gradient. The women are dressed in professional or semi-formal attire. One woman in the foreground is wearing a green and black patterned top, while another is wearing a white top. They appear to be in a well-lit indoor space, possibly a conference or a formal event.

“Our present moment needs, more than ever, the wisdom of feminist scholarship and public engagement to understand pressing problems that cut across multiple issues.”

— Susan Lurie, director

From the Director

This last academic year has been exciting for our center. Our academic programs remain strong, offering unique opportunities for interdisciplinary study and feminist engaged research in our well-enrolled courses. Outstanding public talks by cutting-edge researchers, prominent public intellectuals and influential activists have brought people from Rice, Houston and beyond into compelling conversations. These mainstays of the center's work create a rich environment in which our students excel, whether they are majors in Women, Gender and Sexuality, minors in Poverty, Justice and Human Capabilities, or Ph.D. students in our graduate certificate program. When they graduate, they go on to become outstanding alumni of the university and citizens of the world, like Noorain Khan '06, whom we honored this year with our Distinguished Alumna Award.

As you will see in the following pages, our signature practice of feminist engaged research is dedicated in all its forms — student community engagement; faculty scholarship; interdisciplinary, collaborative and/or community-oriented research — to working toward a more just future. We are especially mindful that our present moment needs, more than ever, the wisdom of feminist scholarship and public engagement to understand pressing problems that cut across multiple issues — women's, gender, and LGBT equality; just immigration policy; affordable access to healthcare; addressing poverty and unmet need; access for all to the protections of civil democracy; and sustaining the environment.

Finally, we are fortunate indeed to have donors whose vision and support are integral to all we do. We are grateful that in 2016–2017, our donors' contributions surpassed all previous benchmarks. With the help of our Partners of the Center and our advisory board, we are well-positioned to continue expanding all facets of our programming as we celebrate our 25th anniversary in 2017–2018!



Warmly, Susan Lurie

Our Mission

The Center for the Study of Women, Gender and Sexuality at Rice University fosters interdisciplinary research and teaching that addresses women, gender and sexuality. The center's programs support scholarly work, innovative teaching in graduate and undergraduate education, and research partnerships with institutions and community organizations. The center's goal is to make a better world by promoting critical knowledge and relationships with communities that extend our understanding of the lives of women, the history and politics of sexuality, and gender as a key influence on the quality of life.



Seminar and Practicum in Engaged Research Reception, April 26, 2017

The Year in Numbers

Nine public lectures
attracted a total of
approximately **630**
attendees from both
on and off campus.

9

100

One hundred Partners of the Center donated \$57,270 toward our work.

50

Our 50 faculty affiliates served 148 declared students.

148

• (Majors only) **10** • Both major and minor **2**

• (Minors only) **90** • Graduate certificate students **46**

The Year in Numbers

CSWGS offered **57** core
and cross-listed classes,
which enrolled **764** students
and directly impacted

1 in 8

students across the university.

28

SWGS undergraduate
courses offered

306

undergraduate students
enrolled in SWGS courses

27

PJHC courses offered
(does not include SWGS courses)

448

undergraduate students
enrolled in PJHC courses

2

graduate courses
offered

10

graduate students
enrolled in SWGS courses

22

new alumni for a total of **262** alumni since 1992

New Initiatives



Rice Feminist Forum

At our May 2016 planning retreat, we recognized that intensifying debate over issues impacting women's lives and the politics of sexuality and gender had created an urgent need for spaces where feminists engage those concerns. That same month, we launched the Rice Feminist Forum: ricefeministforum.org. Since the launch, we have issued five thematic calls ranging from "The Woman Card" to "Presidential." With short essays from undergraduates, center faculty affiliates, graduate certificate students, Partners of the Center and advisory board members, the forum has reached more than 1,300 unique visitors.



Ecofeminism 2.0

Human activity is changing the Earth and the environments on which we depend. At the same time, current generations of feminist scholars are increasingly aware that these processes are deeply connected to questions of women, gender and sexuality. In spring 2017, CSWGS collaborated with Rice's Center for Energy and Environmental Research in the Human Sciences to host a two-day event combining the March 30 Gray/Wawro Lecture in Gender, Health and Well-Being by Dian Million (pictured) with an invited roundtable workshop the following day to discuss potential feminist analyses of the dramatic transformations of Earth systems in our litho-, aqua-, bio- and atmospheric present. Guests at the roundtable included CSWGS faculty affiliates and invited colleagues Dian Million, Jennifer Wenzel (Columbia University) and Greta Gaard (University of Wisconsin–River Falls). The conversation was recorded and professionally transcribed in preparation for a co-authored article that will be submitted to a journal for publication.

Center Events

Our public lectures and events provide a platform for stimulating conversations with leading scholars and help foster feminist community in Houston. We welcomed over 630 people to our events in the 2016–2017 academic year.

Gray/Wawro Lectures in Gender, Health and Well-Being:

Nov. 10, 2016

“Girls and Sex: Navigating From Shame to Joy”

Peggy Orenstein, author of “Girls and Sex”

Presented in collaboration with the Evelyn Rubenstein JCC

Ann and Stephen Kaufman Jewish Book and Arts Fair

Peggy Orenstein



March 2, 2017

“Black Feminism to the Rescue: Black Lives Matter and the Future of Black Politics”

Cathy J. Cohen, David and Mary Winton Green Professor of Political Science; chair of Political Science, University of Chicago

March 30, 2017

“Generations, Indigenous Kin and the Sexual Nexus”

Dian Million, associate professor of American Indian studies, University of Washington



Cathy J. Cohen

Center Events

Graduate Colloquium Lectures:

Oct. 27, 2016

"Notes From a Critic, or Black Feminism Remixed"

Jennifer Christine Nash, assistant professor of American studies; director of Women's Studies Program, George Washington University

Dec. 1, 2016

"Raising a Voice in Protest, Issuing a Call to Action: Anna Julia Cooper's Intersectional Vision"

Vivian M. May, director of the Humanities Center; professor, women's and gender studies, Syracuse University

March 29, 2017

"Things That Divide Us Are Trifling: Cold War Feminism in North Korea"

Suzy Kim, associate professor of Korean history, Rutgers University

Other Events:

Sept. 7, 2016

CSWGS Fall Opening Reception

Sept. 15, 2016

"Uncovered: How I Left Hasidic Life and Finally Came Home"

Leah Lax

Presented in collaboration with the Boniuk Institute for Religious Tolerance

Sept. 27, 2016

Brown Bag Lecture

"Chemical Kin/Esthesia"

Vanessa Agard-Jones, assistant professor of anthropology, Columbia University

Presented in collaboration with the Department of Anthropology

Feb. 20, 2017

Lunch & Learn

"The View of the LGBTQI Struggle From the Inside of American Religious Traditions"

Rabbi Mychal Copeland, director of Interfaith Family

Presented in collaboration with Jewish Studies

March 31, 2017

Mutant Anthropology Series

"Substance as Method"

Joe Dumit, professor of anthropology and science and technology studies, University of California, Davis

Presented in collaboration with the Department of Anthropology, 3CT and CENHS

April 11, 2017

Queer Seder

Presented in collaboration with Hillel and the Queer Resource Center

April 21, 2017

CSWGS 10th Annual Graduate Symposium

Keynote Address: "Defining Justice in an Era of Alternative Facts"

Jade Sasser, assistant professor of gender and sexuality studies, University of California, Riverside

April 26, 2017

CSWGS Seminar and Practicum in Engaged Research Reception

Feminist Economics

Feminist Economics is a peer-reviewed journal that provides an open forum for dialogue and debate about feminist economic perspectives. By opening new areas of economic inquiry, welcoming diverse voices and encouraging critical exchanges, the journal enlarges and enriches economic discourse. The goal of Feminist Economics is not just to develop more illuminating theories, but also to improve the conditions of living for all children, women and men.

The journal's 2016 impact factor was released in mid-June 2017. The one-year impact factor was 1.476 (a 28 percent increase over 2015).

The 2016 five-year impact factor was 1.628 (a 25 percent increase over 2015).

In 2016, the journal received the highest annual number of submissions since its founding.

PJHC Minor

Gillian Perkins '18 volunteered to teach students in Bihar, India, during the summer of 2016

Gillian Perkins '18, poverty, justice and human capabilities minor and economics major, served as a Susan

McAshan Summer Service intern in Bihar, India, where she worked with a local nonprofit organization. "In the end I realized something really important," Gillian said of her experience. "The goal isn't to leave feeling like you just did a good thing. The goal is to leave wanting to do more."

The minor in Poverty, Justice and Human Capabilities provides students with a multifaceted understanding of human well-being in the U.S. and throughout the world. Directed by Diana Strassmann, Carolyn and Fred McManis Distinguished Professor in the Practice of Humanities, this interdisciplinary minor requires advanced coursework along with a substantial commitment to serving disadvantaged communities and people. Service learning opportunities include the Susan McAshan Summer Service Internships, where students work directly with service organizations in Houston, elsewhere in the U.S. and abroad. Through their academic and experiential learning opportunities, students explore deeper understandings of the structural factors underlying poverty and human well-being. To date, 151 students have completed the minor, and an additional 30 students have declared or pledged to complete the minor.



Prizes and Awards

Best Essay Prizes

Kaitlyn Zoeller '19: "Feminism and Female Sexuality in New Orleans and Its Literature"

Aislyn Orji '18: "The Woman in the Red Dress"

Nathanael Homewood (Department of Religion): "I was on fire": The Challenge of Counter-Intimacies Within Zimbabwean Christianity"

Visionary Partners' Dissertation Fellowships

Brittany Henry (Department of English)

Nathanael Homewood (Department of Religion)

Itohan Idumwonyi (Department of Religion)

Merfish Award: Bridget Schilling, 2017 recipient

Balkishan Award: Di Di, 2017 recipient

Practicum Research Fund: Meredith Glaubach

Oral History Internship: Brooke English, summer 2016

CSWGS also congratulates two PJHC minors who won significant awards this year:

Camila Kennedy: **Fulbright Fellowship**

Madhuri Venkateswar: **Watson Fellowship**



Di Di

Brooke English



Bridget Schilling



Meredith Glaubach

Alumni Spotlight

Noorain Khan '06

On April 6, 2017, CSWGS was pleased to honor Noorain Khan '06 with our Distinguished Alumna Award. Past recipients of the award include Angela Hunt '94, Rene Almeling '98, Kate Hildebrandt '09 and Hon. Annise Parker '78.

Currently a program officer for the Ford Foundation, Noorain graduated from Rice with a triple degree in political science, religious studies, and the study of women, gender and sexuality, for which she wrote an honors thesis titled, "Public Image; Private Identities: Veiling American Muslim Women."

After graduating, Noorain received a prestigious Rhodes Scholarship.

She earned an M.Phil. in migration studies while at Oxford and continued to Yale Law School to receive her J.D. in 2011. She has appeared on the Forbes 30 Under 30 list and received the Legal Aid Society's Pro Bono Publico Award for her commitment to volunteer legal services for the poor and disadvantaged.

We are delighted to honor her and cannot wait to see what she will do next!

You can learn more about Noorain in an April 14, 2017, feature article from [elle.com](#).



(L-R) Elora Shehabuddin, Noorain Khan and Susan Lurie

New Alumni

Majors:

Kevin Armstrong
Meredith Glaubach
Olivia Lee

Minors:

Anniina Ala-Seppaelae
Benito Aranda-Comer
Meredith Bouchein
Caroline Brigham
Magen Eissenstat
Rachel Galton
Lena Hall
Camila Kennedy
Zara Khan
Anna Klineberg
Joshua Marrs
Catherine Miller
Jordan Poles
Bridget Schilling
Madhuri Venkateswar

Certificate:

Lindsey Chappell
Sophia Hsu
David Ponton
Rachel Schneider

Faculty Affiliates

José F. Aranda, Jr.

Associate Professor of English and Spanish, Portuguese
& Latin American Studies
Co-Coordinator, Undergraduate Mellon Program

Andrea Ballesterio

Assistant Professor of Anthropology

Tani Barlow

Ting Tsung and Wei Fung Chao Professor of History

Elias K. Bongmba

Harry & Hazel Chavanne Chair in Christian Theology
Professor of Religion
President of the African Association for the Study of Religion

Jenifer Bratter

Associate Professor of Sociology
Director of Race Scholars at Rice

Marcia Brennan

Professor of Religion and Art History

Joseph Campana

Alan Dugald McKillop Chair in English
Associate Professor of English

Krista Comer

Associate Professor of English

April D. DeConick

Isla Carroll and Percy E. Turner Professor of New Testament
and Early Christianity
Department Chair of Religion

Scott Derrick

Associate Professor of English

James D. Faubion

Radoslav Tsanoff Chair of Public Affairs
Professor of Anthropology

Julie Fette

Associate Professor of French Studies
Deputy Speaker of the Faculty Senate

Eugenia Georges

Professor of Anthropology
Department Chair of Anthropology

Beatriz González-Stephan

Lee Hage Jamail Chair of Latin American Studies
Professor of Spanish, Portuguese & Latin American Studies

Bridget Gorman

Professor of Sociology
Department Chair of Sociology

Deborah Harter

Associate Professor of French Studies

Michelle Hebl

Martha and Henry Malcolm Lovett Chair of Psychology
Professor of Psychology and Management

Rosemary Hennessy

L. H. Favrot Professor of Humanities
Department Chair of English

Cymene Howe

Associate Professor of Anthropology
Associate Director, CSWGS

Continued

Faculty Affiliates *Continued*

Lacy M. Johnson

Assistant Professor of Creative Writing

Betty Joseph

Associate Professor of English

Rachel Kimbro

Professor of Sociology

Anne C. Klein

Professor of Religion

Jeffrey J. Kripal

J. Newton Rayzor Chair in Philosophy and Religious Thought

Professor of Religion

Colleen Lamos

Associate Professor of English

Caroline Levander

Carlson Professor in the Humanities

Professor of English

Vice President of Strategic Initiatives and Digital Education

Thad Logan

Lecturer of English

Susan Lurie

Associate Professor of English

Director, CSWGS

Susan Keech McIntosh

Herbert S. Autrey Professor of Anthropology

Helena Michie

Agnes Cullen Arnold Professor in Humanities

Professor of English

Deborah Nelson-Campbell

Professor of French Studies

Nancy A. Niedzielski

Associate Professor of Linguistics

Department Chair of Linguistics

Kirsten Ostherr

Gladys Louise Fox Professor of English

Nanxiu Qian

Professor of Chinese Literature

Brian Riedel

Professor in the Practice of Humanities

Assistant Director, CSWGS

Paula Sanders

Professor of History

Director of the Boniuk Institute

Leslie Schwindt-Bayer

Associate Professor of Political Science

Marwa Shalaby

Baker Institute Fellow for the Middle East

Director of the Women's Rights in the Middle East Program

Elora Shehabuddin

Associate Professor of Humanities and Political Science

Meredith Skura

Libbie Shearn Moody Professor of English

Diana L. Strassmann

Carolyn & Fred McManis Distinguished Professor in the Practice of Humanities

Director of the Program on Poverty, Social Justice, and Human Capabilities

Founding Editor of Feminist Economics

Ewa M. Thompson

Professor of Slavic Studies

Nicole A. Waligora-Davis

Associate Professor of English

Kerry R. Ward

Associate Professor of History

Melissa Weininger

Anne Smith Fine Senior Lecturer in Jewish Studies

Associate Director of the Program in Jewish Studies

Lora Wildenthal

Professor of History

Associate Dean of Humanities

Diane Wolfthal

David and Caroline Minter Professor of Humanities

Professor of Art History

Zoë Wool

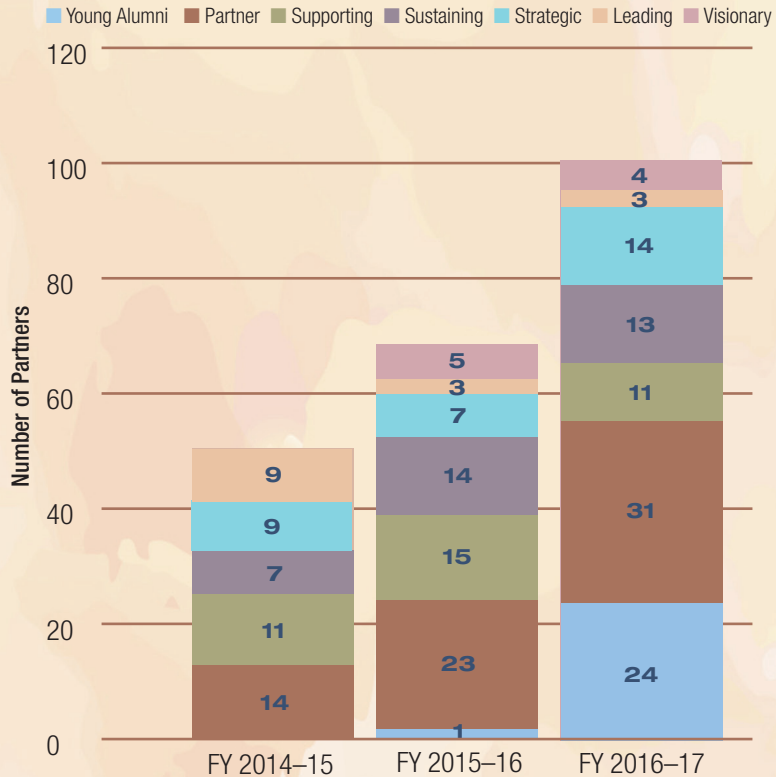
Assistant Professor of Anthropology

Fay Yarbrough

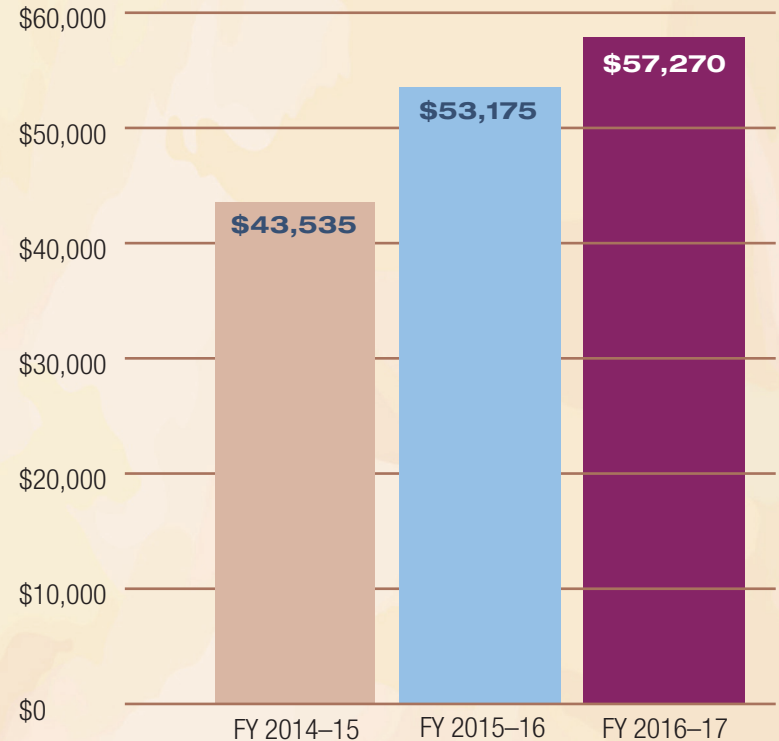
Associate Professor of History

Financial Summary

Partner Breakdown by Donation Level



Donation Totals by Fiscal Year



Advisory Board



Judge Steven Kirkland '82 (chair) is currently judge in the 334th Civil District Court of Harris County. He has previously served as judge in the 215th Civil District Court and in the Houston municipal courts. His professional career includes representing the city of Houston, international oil companies and individual homeowners. Judge Kirkland is active in promoting recovery from drug and alcohol addiction, affordable housing, historic preservation and LGBT rights. His affordable housing projects

have been recognized with awards by the Greater Houston Preservation Alliance, and he was awarded the 2006 Government Friend of the Homeless by Coalition for the Homeless of Houston and Harris County.



Anne Shen Chao '05, '09 is an adjunct lecturer in the humanities and manager of the Houston Asian-American Archive at Rice University. She is a modern Chinese historian and uses digital humanities methodology in research. She is currently on the boards of the Houston Endowment, the Museum of Fine Arts Houston and the Houston Ballet, among others.



Meghan Davenport '15 graduated from Rice with a bachelor's degree in psychology and a minor in business. While at Rice, she served as the president of Lovett College and as the undergraduate representative to the President's Working Group on Sexual Misconduct. She currently works at YES Prep Public Schools as the manager of certification.



Karen Ostrum George '77, '78 received her B.A. from Rice University in 1977 and a Master of Accounting from the Jones Graduate School of Business at Rice in 1978. She is a certified public accountant and has been an associate with Ralph S. O'Connor & Associates since 1987. At Rice, Karen is a trustee emerita and has been active in many areas of the university. In the community, Karen is especially interested in organizations that empower women and their families. She is the current board president of The Women's Home, on the advisory board of The Women's Resource of Greater Houston and is former chair of the board of directors of Planned Parenthood Gulf Coast. She also serves on the Wiki Education Foundation and the HSPVA Friends board of directors. Karen is married to attorney Larry George and they have two daughters, Camille and Meredith.



Ron Goines is the director of major and annual gifts at Planned Parenthood Gulf Coast where he oversees development programs in Texas and Louisiana. He has almost 10 years of development experience serving Gulf Coast communities. Before coming to PPGC, Ron served as the director of special events and corporate relations at AIDS Foundation Houston, where he coordinated Houston's citywide AIDS Walk and managed the organization's other premier events. Additionally, Ron serves on many boards and committees including the city of Houston's LGBT Advisory Board, the Victory Fund and Institute, and The Human Rights Campaign. Ron is a Louisiana native and an alum of Oberlin College '05.

Advisory Board



Melanie Gray (founding chair, 2009–2013) is a complex commercial litigation partner with Winston & Strawn LLP who specializes in bankruptcy litigation. Melanie helped found the center's advisory board and she and her husband, Mark Wawro, have funded the Gray/Wawro Lectures in Gender, Health and Well-Being since 2010. Melanie is also active in and serves on the boards of a number of other nonprofit organizations, including Girls Inc., Houston Area Women's Center, Baylor College of Medicine, Syracuse University, Foundation for Jones Hall, and Teen and Family Services.



Karen L. Jones has over 17 years of corporate experience in senior management with Fortune 500 companies. She lived in Europe for more than five years and has worked in academia in the U.S. and Europe for more than 15 years. She is an international speaker and author in management and sports law. She is the owner of Mission2Transition, LLC, which helps businesses with management, operations and legal support. She is part of the sport management faculty at Rice University and leads the sports law concentration.



Richard A. Lapin is a member of the International Government Relations group at Anadarko Petroleum Corporation. His primary responsibilities include political risk analysis and working with foreign governments on existing projects. Prior to joining Anadarko in 2010, Richard was deputy chief of staff for administration for Mayor Bill White of Houston from 2004–2009. Richard holds a B.A. in history from Yale University and a J.D. from the University of Texas School of Law.



Lynn Mathre '79, '81 is president, founder and a member of the executive committee at Asset Management Advisors. Prior to establishing Asset Management Advisors in 1986, she served as a managing partner of a financial planning firm and has over four years of tax practice in public accounting, including the international tax practice at Arthur Andersen. She holds a Master of Accounting and a B.A. in sociology from Rice University. She is a board member of the United Way of Greater Houston, serving on several committees. She is president of the Orange Show Foundation for Visionary Art, and also serves as a director on the board of Houston Public Media.



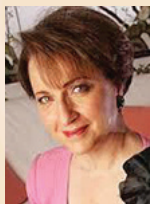
Sherry Matusoff Merfish (former chair, 2014–2016) has had a long career in advocacy and fundraising. From 1993–2009, she served as a majority council director for EMILY's List, conceiving, planning and implementing the Major Donor program in a range of states, including her native Texas. Prior to her time at EMILY's List, Sherry worked as an advocate within the Jewish community by engaging in speaking tours concerning the pernicious Jewish American Princess stereotype, an effort that resulted in widespread press attention and brought about a significant cultural shift. The work of culture change is at the heart of Sherry's efforts, as exemplified by her co-founding of notalone.us with her daughters, an organization that asks women to join the conversation around reproductive justice by disclosing their abortion histories. Notalone.us was inspired by Sherry's own brave disclosure of her abortion in a 2013 New York Times op-ed.

Advisory Board



Jennifer Nelsen is assistant general counsel for the Laura and John Arnold Foundation. Before joining the foundation, Jennifer was an attorney with Winston & Strawn LLP and Weil, Gotshal & Manges LLP, where her practice focused primarily on complex commercial litigation. She began her legal career as a law clerk for Hon. Melinda Harmon, United States district judge for the Southern District of Texas. Jennifer is on the Houston advisory council for the Tahirih Justice Center, the board of directors for the Hana and

Arthur Ginzburg Nature Discovery Center and the steering committee for the Menil Contemporaries. She holds degrees from Washington and Lee University and New York Law School.



Collyn A. Peddie '79 was born and grew up in Houston. She graduated from Rice University as Phi Beta Kappa with honors and a triple major. She then moved to Washington, D.C., to attend George Washington University, where she received her law degree with honors in 1982. In Washington, Collyn was a Wallace Fellow at the Center for the Study of the Presidency and Congress, an organization of political, academic and military leaders. She now lives and practices law in Houston.



Cathryn Selman '78 graduated from Rice with a B.A. in economics and history. She earned her MBA from Harvard in 1982. She has been diligently involved in the Rice community in numerous capacities from fundraising to the Friends of Fondren Library.



Dinesh Singhal is a trial attorney licensed in Texas, California, New York and Delhi, India, with over 20 years of experience in commercial litigation. Dinesh is board certified in civil trial law by the Texas Board of Legal Specialization and he is listed on the 2017 Texas Super Lawyers list for business litigation. Dinesh currently serves as president of the Harris County Democratic Lawyers Association and on the advisory board of the University of Houston India Studies program. Dinesh previously served on the board

of Houston's iconic Rothko Chapel, as co-chair of the Houston Bar Association Fee Dispute Committee, as the 2015 annual fund parent co-chair of St. John's School, as the 2015 annual fund chair of Houston's Voices Breaking Boundaries and as a trustee of the Houston Lawyer Referral Service. Dinesh earned his J.D. from the UHLC, and has a Bachelor of Laws and a Bachelor of Commerce from the University of Delhi.



Karen A. Twitchell has a B.A. in economics from Wellesley College and an MBA from Harvard Business School. She has extensive experience on nonprofit and for-profit boards. From 2010–2013, she was executive vice president and chief financial officer of Landmark Aviation. Prior to that, she was vice president and treasurer of LyondellBasell. In 2014, the Wiki Education Foundation elected her to its board of directors.



Lidija Wilhelms '14 majored in French studies with a minor in biochemistry and cell biology at Rice. She is currently in graduate school at Baylor College of Medicine pursuing a Ph.D. in integrative molecular and biomedical sciences with an interest in cancer research. She focuses on representing women in scientific research and creating dialogues between current Rice students interested in becoming scientists and high-powered women in the Texas Medical Center.

Donors to the Center

Visionary Partners

Dr. Anne Chao*
Melanie Gray and Mark Wawro*
Houck Family Foundation*
Sherry and Gerald Merfish*
Diana Strassmann and Jeff Smisek*

Leading Partners

Karen Ostrum George*
Karen A. Twitchell*
Rod Wood

Strategic Partners

Melinda Clark and Clark Trantham*
Virginia A. Clark
Virginia Arnold Elkins
Ellen Gaber
Noorain Khan and Sabeel Rahman
Judge Steven Kirkland*
Nancy McGregor and Neal Manne*
Lynn Mathre*
Muffie Moroney*
Paula Sanders
Phyllis and Jack Selber
Cathryn and Doug Selman*
Buddy Steves and Rowena Young
Stephen E. Stewart

Sustaining Partners

Nancy C. Allen
Abby Daniels
Jewel Day

Heidi Dugan
Jan Woodward Fox
Paul Guillory
Rosemary Hennessy
Sandra Lowery
Jennifer Nelsen
Collyn A. Peddie*
Laura Sawyer
Nita Israni and
Dinesh HariKiran Singhal

Supporting Partners

Anne Chandler
Sabra Gallo and Frederick Post
Carolyn and Jay Kaplan
Melvin and Janey Lack
Susan Lurie
Beverly McPhail
Beth Merfish and Daniel Coleman
Dr. Lynn P. Rosas*
Elora Shehabuddin
Crystal Washington*
Lora Wildenthal

Partners

Anne Adams and George Gorry
Natalye Appel
Minette Boesel
Chris Bryan and Trey Peacock
Janet Caldwell
Hon. Ellen Cohen
Meryl Cohen

Debby Crabtree
Priyanka Duvvuru
Sarah Flournoy
Zita Giraldo
Ron Goines and Jeremy Hains
Gayle Goodman
Mary Margaret Hansen*
Burdine Clayton Johnson*
Gail Klein
Drs. Eugenie Kleinerman and
Leonard Zwelling*
Drs. Craig Klugman and
Joseph Reses*
Norri and Jason Leder
Brett Merfish
Michael Clark and Sallie Morian
Nancy Niedzelski
Harriet Reynolds and
Anne Wallentine
Brian Riedel and Martin Sunday
Carey Shuart; Hinda Simon*
Roanne Nelson Stern
Michelle Tellock
Kerry Ward
Fay Yarbrough
Katherine and Mark Yzaguirre
Jeanette Stevens Zey

Young Alumni Partners

Anniina Ala-Seppaelae
Benito Aranda-Comer
Kevin Armstrong

Meredith Bouchein
Caroline Brigham
Lindsey Chappell
Meghan Davenport
Magen Eissenstat
Rachel Galton
Meredith Glaubach
Lena Hall
Sophia Hsu
Camila Kennedy
Zara Khan

Anna Klineberg
Olivia Lee
Joshua Marrs
Catherine Miller
Jordan Poles
David Ponton
Rachel Poppers
Bridget Schilling
Rachel Schneider
Madhuri Venkateswar

Founding Partners:

Their early and generous support helped to build our foundation
Anne Chao; Karen Ostrum George; Melanie Gray and Mark Wawro; Houck Family Foundation; Burdine Clayton Johnson; Gerald and Sherry Merfish; Eileen D. Olson; Cathryn and Doug Selman; Diana Strassmann and Jeff Smisek; Karen A. Twitchell

The center also recognizes the following donors' exceptionally generous support:

The Bridgeway Foundation; The Clayton Fund, Inc.; Melanie Gray and Mark Wawro; The Susan Vaughan Foundation; Cathryn and Doug Selman; Beth Merfish and Brett Merfish; Burdine Clayton Johnson; The Houston Endowment; Karen A. Twitchell; Nita and Dinesh HariKiran Singhal

Matching funds have been generously provided by:
ExxonMobil Foundation and the Ford Foundation.

CSWGS Leadership

STAFF

Susan Lurie
Cymene Howe
Brian Riedel
Angela Wren Wall

Director
Associate Director
Assistant Director
Center Coordinator

STUDENT WORKERS

Baird Campbell
Nathanael Homewood
Mel Ford
Meredith Glaubach

Website/Newsletter Editor
Partner of the Center Assistant
Partner of the Center Assistant
Student Assistant

CSWGS STEERING COMMITTEE

Chair: Susan Lurie

Core Members: Cymene Howe, Brian Riedel, Elora Shehabuddin

Term Core Members: Krista Comer, Rosemary Hennessy, Helena Michie, Diana Strassmann

Elected Members: Andrea Ballesterio (2016–2018); Leslie Schwindt-Bayer (2015–2017); Nancy Niedzielski (2016–2018); Fay Yarbrough (2015–2017)

Annual Report Editing Team

Brooke English, Brian Riedel

Photo/Image Credits

Public Affairs (cover, 2, 19); Yvonne Tran (pages 1, 3, 6, 7, 11); Baird Campbell (Page 5); International Association for Feminist Economics (Page 9); Gillian Perkins (Page 9); Bridget Schilling, Dinesh Singhal, Brooke English, Meredith Glaubach (Page 10); CSWGS Advisory Board members (pages 15–17)



cswgs.rice.edu
www.facebook.com/cswgs